

**280 - 300 Wp
60 MONOCRYSTALLINE CELLS**

AEG solar modules combine the most advanced technology with high reliability in manufacture to offer you a product meant for high achievements.



**HIGH EFFICIENCY
WITH PERC TECHNOLOGY**

The AEG solar module AS-M601D features PERC coating*, which allows you to gain extra efficiency and boost the performances of your solar plant.



**THOROUGHLY TESTED
AND MADE IN EUROPE**

The manufacturing processes of AEG solar modules follow rigorous quality criteria to provide a long-lasting product made in Europe

COMPREHENSIVELY CERTIFIED

AEG solar modules and production facilities are compliant with the the latest standards to guarantee safety and reliability. Production facilities are certified according to ISO 9001, ISO 14001 and OHSAS 18001. AEG solar products are certified among others by:



YOUR ADVANTAGE AT A GLANCE

Premium solar panel made in Europe
High efficiency - up to 300 Wp
Product certified IEC 61215, IEC 61730
10 years Product warranty
25 years linear Power warranty

More on: www.aeg-industrialsolar.de



ELECTRICAL CHARACTERISTICS AT STC¹

Nominal Power (P _{max})	[Wp]	280	290	300
Tolerance on Nominal Power P _{max} ²	[Wp]	-0 / +5	-0 / +5	-0 / +5
Maximum Power Voltage (V _{mp})	[V]	32.5	32.7	32.8
Maximum Power Current (I _{mp})	[A]	8.67	8.86	9.14
Open Circuit Voltage (V _{oc})	[V]	39.2	39.9	40.05
Short Circuit Current (I _{sc})	[A]	8.99	9.75	9.95
Module Efficiency (η _m)		17.21%	17.82%	18.44%
Maximum System Voltage	[V]	1000	1000	1000
Series Fuse Maximum Rating	[A]	15	15	15

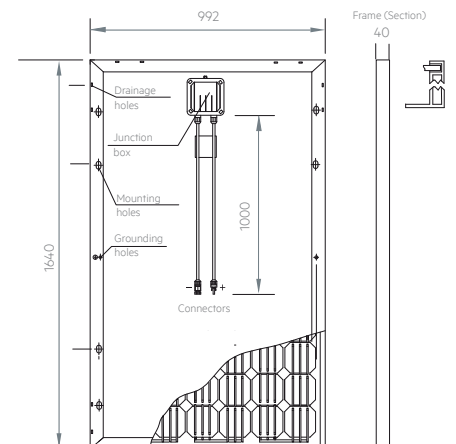


TEMPERATURE CHARACTERISTICS (275-285 Wp)

NOCT	45°C ± 2°C
P _{max} Temp. Coefficient (γ)	-0.32 % /°C
V _{oc} Temp. Coefficient (β)	-0.39 % /°C
I _{sc} Temp. Coefficient (α)	+0.05% /°C
Operating temperature	-40°C to +85°C

MECHANICAL CHARACTERISTICS

Solar cells	60 (6 x 10) monocrystalline silicon, 156 x 156 mm (6") cells
Front glass	3.2 mm (0.13") high-transparency AR coating glass
Backsheet	White backsheet
Encapsulant	EVA (Ethylene-Vinyl Acetate)
Frame	Anodized aluminum alloy, silver
Junction box	IP67 rated, 3 bypass diodes
Cables	UV resistant cable 1000 mm (39.3"), sec.4.0 mm ²
Connectors	MC4 compatible connectors
Dimensions	1640 mm x 992 mm x 40 mm (64.5" x 39.1" x 1.57")
Weight	19.5 kg (42.9 lbs)
Maximum load	Wind: 2400 Pa / Snow: 5400 Pa



Module dimensions in the technical picture are expressed in mm with tolerance ±2 mm (±0.079")

1 - Standard Test Conditions (STC): Irradiance 1000 W/m², Air Mass AM = 1.5, Cell Temperature 25°C; Power measurement uncertainty within ± 3%.

2 - AEG photovoltaic modules are classified according to a principle of positive power tolerance: the Power Output measured at STC of the delivered modules exceeds their assigned Nameplate Nominal Power at STC within a power tolerance range between -0 Wp and +5 Wp.

3 - No less than 97% of the minimum "Peak Power at STC" in the first year; power output decline no more than 0.7% per year thereafter)

© Solar Solutions GmbH. AEG is a registered trademark used under license from AB Electrolux (publ). Specifications in this datasheet are subject to change without notice. Code: AS-M601D-P-E6N1-3BB 280-300 version 201706.1 EN

PACKING CONFIGURATION

Packing configuration	29 pcs / pallet
Loading Capacity	812 pcs / 40 ft HC

WARRANTIES

Product warranty	10 years
Performance warranty	25 years, linear ³

CONTACT US

Solar Solutions GmbH | Schneckenhofstrasse 19 | 60596 Frankfurt am Main | Germany
 Tel: +49 69 400 500 810 | Fax: +49 69 400 500 819 | Mail: info@aeg-industrialsolar.de
www.aeg-industrialsolar.de